

MP Graph Software

57710899

Copyright ©1998 Slope Indicator Company. All Rights Reserved.

This equipment should be installed, maintained, and operated by technically qualified personnel. Any errors or omissions in data, or the interpretation of data, are not the responsibility of Slope Indicator Company. The information herein is subject to change without notification.

This document contains information that is proprietary to Slope Indicator company and is subject to return upon request. It is transmitted for the sole purpose of aiding the transaction of business between Slope Indicator Company and the recipient. All information, data, designs, and drawings contained herein are proprietary to and the property of Slope Indicator Company, and may not be reproduced or copied in any form, by photocopy or any other means, including disclosure to outside parties, directly or indirectly, without permission in writing from Slope Indicator Company.

Slope Indicator Company
A Boart Longyear Group Company
3450 Monte Villa Parkway
Bothell, WA 98021-8906 USA
Tel: 425-806-2200 Fax: 425-806-2250



Contents

Getting Started.....	1
MP Graph Basics	3
Saving a Graph	9
Modifying a Graph	10
Exporting Readings.....	12

Getting Started

Overview This chapter introduces the MP Graph program and tells you how to install it.

Introduction The MP Graph program works with project databases created by the MP Manager program. With MP Graph, you can:

Create and print graphs: You can plot readings (or change in readings) against time. You can also corollate readings against a selected sensor.

Export graphs to the Windows clipboard: You can export a graph to the clipboard and paste it into another application, such as Microsoft Word.

Save graphs for reuse: You can save ten different graphs for each database. A “saved graph” is a collection of the parameters used to create a graph, such as graph type, titles and labels, sensor selection, date range, etc. When you have new data, you simply choose the saved graph that you want, reset the date range, and click the graph button to produce an updated graph.

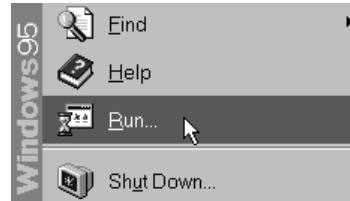
Export readings: You can view readings in tabular form, sorted by sensor, date, or any other column heading, and you can export readings to an ascii file with comma separated values (.csv) for easy import into a spreadsheet.

Installing the MP Graph Program

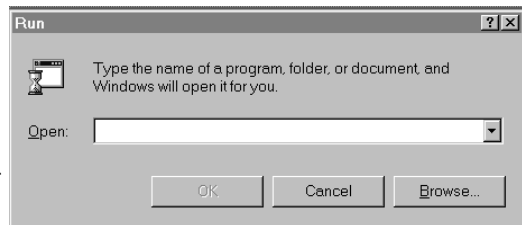
MP Graph is usually installed along with the MP Manager program. Check by choosing Start > Programs > DataMate MP. If you don't see MP Graph, follow the instructions below.

1. Close all programs. Place the DataMate MP Software CD in your CD-ROM drive. If you have 3.5-inch disks, place Disk 1 in your A or B drive. If your Windows95 "Auto-Run" is enabled, the installation program will start. Otherwise, continue with the steps below.

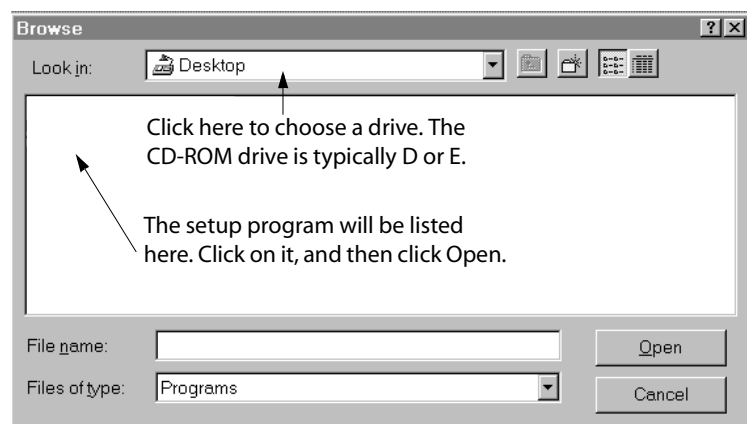
2. Click  to show the Start Menu, then click "Run."



3. When the Run dialog appears, click the Browse button to find the path and file-name of the setup program.



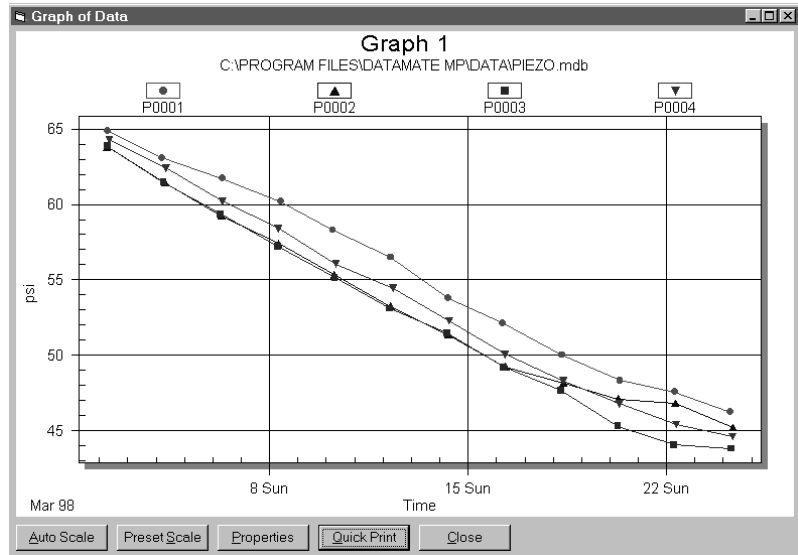
4. When the browse window appears, click in the "Look in" field to choose your CD-ROM drive. Then select the setup file and click "Open." The setup is named "mpgrafxx.exe." The xx is the version number of the Graph program. For example, version 1.0 has a setup named "mpgraf10.exe."



5. When the Run dialog reappears, click OK. Now, follow the instructions that appear on screen.

MP Graph Basics

Overview This chapter tells how to create, print, and export a graph.



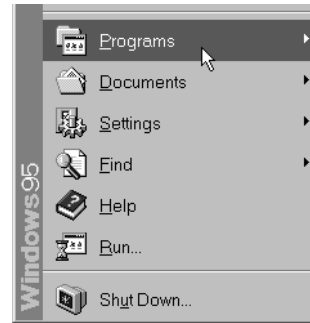
Basic Steps

1. Start MP Graph and open a database.
2. Choose the sensors and time range that you want to graph, then click the “Graph” button.
3. When the graph appears, click the “Quick Print” button.
To export the graph to the clipboard, right-click on the graph and choose “Export Dialog.”

Starting MP Graph

You can start MP Graph from the Manager program (see “Viewing Data” in the MP Manager manual). You can also start MP Graph from the program menu, as explained below:

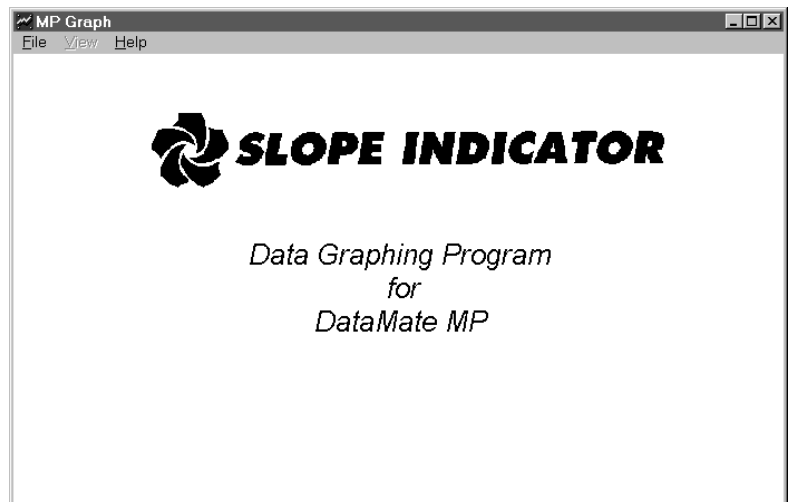
1. Click  to show the Start Menu, then point to “Programs.”



2. Point at DataMate MP, and click on MP Graph.



3. The MP Graph splash screen appears.

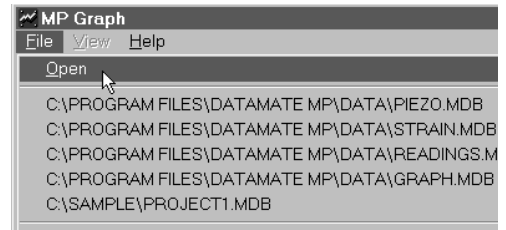


Open a Database

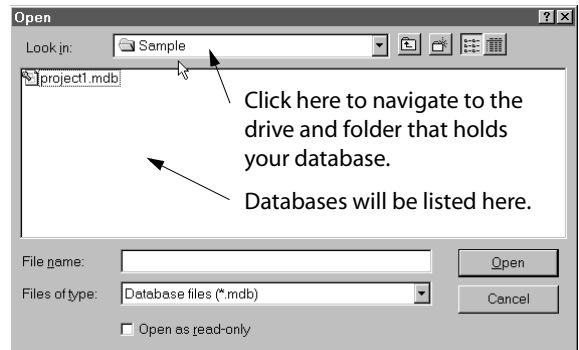
The instructions below tell how to open a database using the File menu. If you start MP Graph from the Manager program, the database is opened automatically.

1. Click on File and then click on “Open.”

MP Graph keeps a list of the databases that you have opened. You can open one of these databases by clicking on its name.

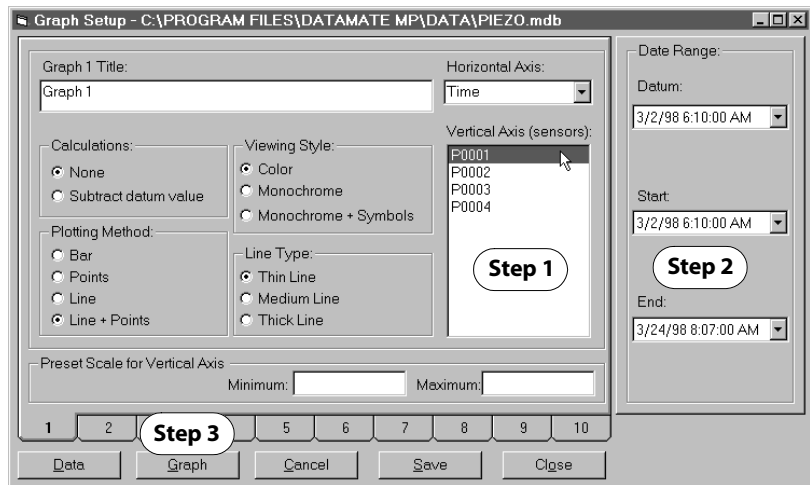


2. Navigate to the folder that holds your database. Click on the database, and then click on the “Open” button.

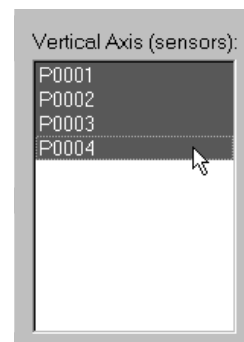



Choose Sensors and a Date Range

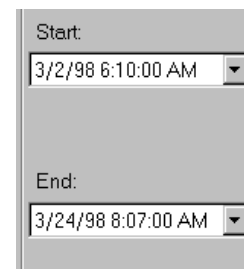
The Graph Setup dialog appears. Follow the three steps below.



- Step 1 **Select sensors:** Click to select the sensors whose data you want to graph. You can ctrl-click to select individual sensors, or shift-click to select a group of sensors.

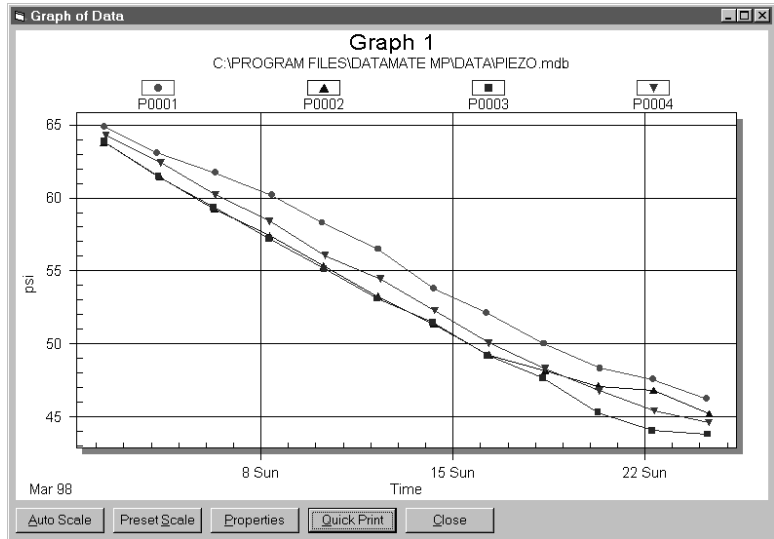


- Step 2 **Select a date range:** Click  to choose different dates. By default, the “Start” and “End” dates are taken from the first and last readings in the database.



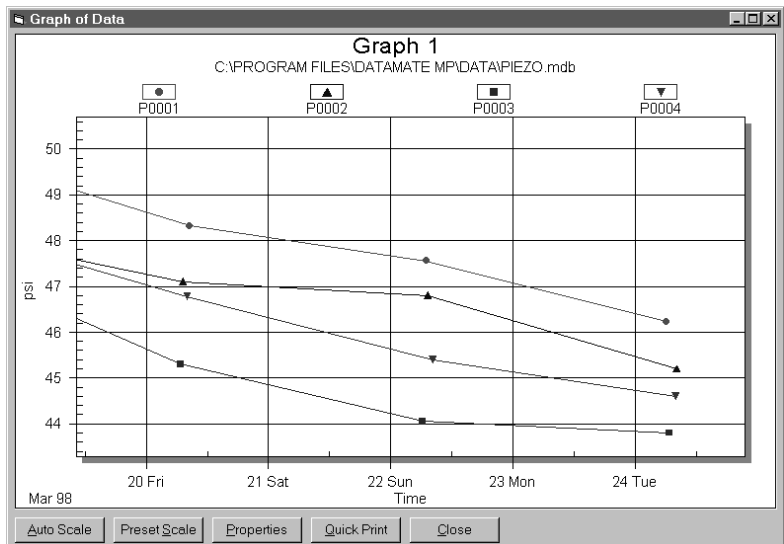
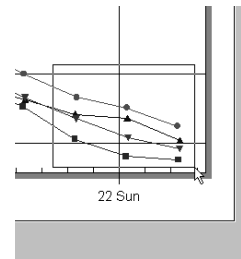
- Step 3 **Click** 

The Graph Appears




Zooming the Graph

1. To zoom into any portion of the graph, just click and drag with the mouse. As you move the mouse, the zoom area is marked by a rectangle.
2. When you release the mouse button, the marked area is enlarged. To revert to the unzoomed graph, click “Auto Scale.”



Printing the Graph

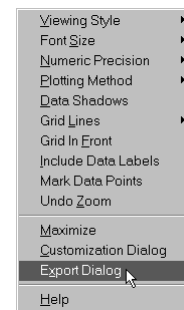
Click  to print the graph.

The “Quick Print” routine uses the default Windows printer. If you want to choose a different printer temporarily, use the export dialog shown below. Choose “Printer” as your destination and click the “Export” button. At that point, a print dialog appears, allowing you to choose a printer.

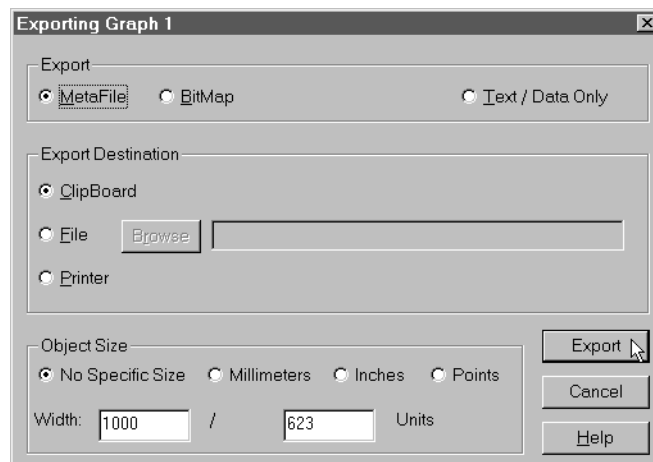
Exporting the Graph

You can export a graph to the Windows clipboard, to a file, or to a printer. If you export to the clipboard or to a file, you can then paste the graph into another Windows document, such as a Microsoft Word document.

1. Right click on the graph, then choose “Export Dialog” from the pop-up menu.
2. When the export dialog appears, choose a file format, a destination, and a size, and then click the “Export” button.



By default, MP Graph exports a Windows Metafile. This is a good format for pasting into another document, since it allows the image to be resized.



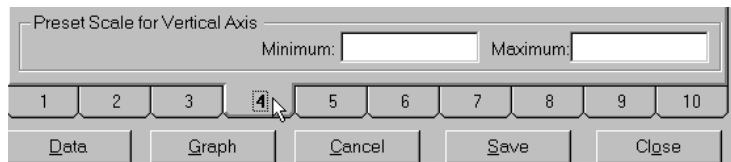
Saving a Graph

Overview This chapter tells how to save a graph. You can save up to ten graphs for each database.

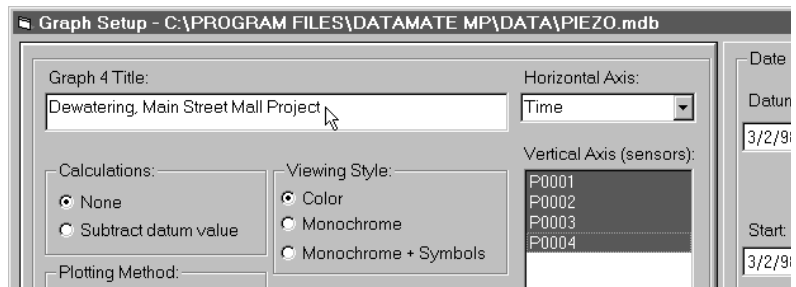
What is a saved graph? A saved is a collection of the parameters used to create the graph, including the graph type, the sensor and date range selection, the y-axis scale, and titles, labels, fonts, and colors.


A saved graph is easy to update. You simply choose the graph that you want, reset the date range, and click the “Graph” button. No other work is necessary, since all the saved parameters are recalled.

- To Save a Graph**
1. Start MP Graph and open a database.
 2. When the Graph Setup dialog appears, click on a numbered tab. In the example below, we have clicked on tab 4.



3. Enter a title and select sensors and any other options that you want. Note that you can always change these options later.

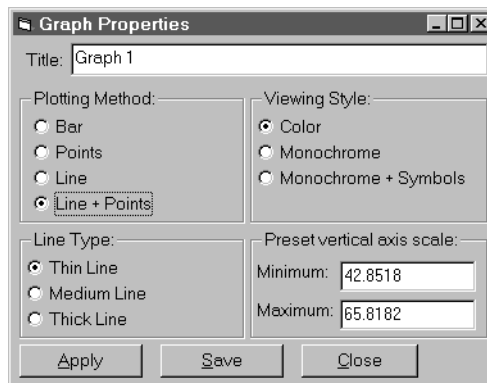


4. Click  to store these parameters as graph 4. If you modify the graph, click Save again to keep the changes. The Save button appears on several other dialogs as well.

Modifying a Graph

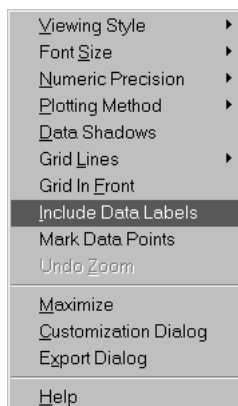
Overview This chapter tells how you can modify the appearance of a graph, once it is displayed. It is probably easier to experiment with the options than to read about them, so descriptions are short.

The Graph Properties Dialog Click the “Properties button” to display the “Graph Properties” dialog. Change any property and click the “Apply” button to see its effect. Click the Save button to save the effect. Click “Close” when you are done. These properties also appear on the Graph Setup screen.



Preset Scale: Use these fields to set the top and bottom values for the Y axis.

The Right-Click Menu Right-click on the graph to display this menu (Click the right-button rather than the left button). The help option provides descriptions of all the available properties.



← This option labels each point on the graph with its value.

← This option displays the customization dialog discussed on the next page.

The Customization Dialog

The “Customization Dialog” provides most of the same options as near the bottom of the menu allows you to change fonts, titles and labels, or colors.

